

Standard Conveyor Chain



RENOLD

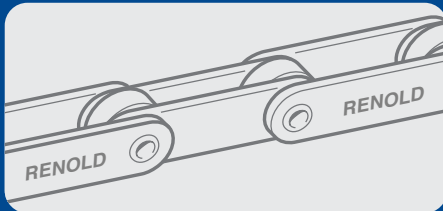
Superior Chain Technology

Renold Standard Conveyor Chain

Renold has established an unrivalled track record in the design and manufacture of Conveyor Chain. The unique properties of Renold's product, its standards and specifications, ensure long lasting performance in demanding applications and environments. We offer complete solutions and total capability in all sectors.

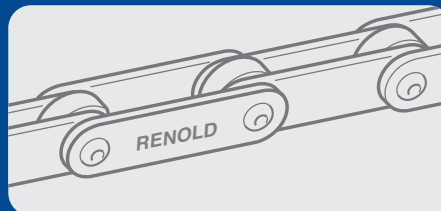
Specifying Renold gives you peace of mind

- The performance of Renold Conveyor Chain is ensured by a programme of continuous testing and quality control
- Specially formulated lubricants reduce initial wear and provide corrosion protection
- Breaking loads exceed the minimum international standards
- Renold's experienced sales, production and design staff are always available to freely advise on particular products and applications



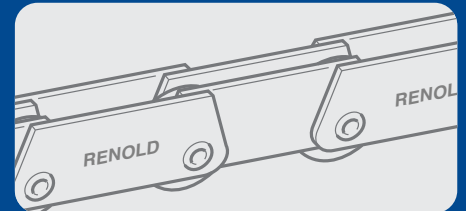
Hollow Bearing Pin Chain

This enables attachments to be fixed to outer links by bolting through the hollow bearing pins.



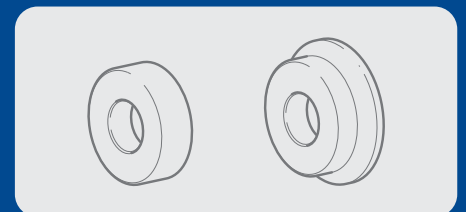
Solid Bearing Pin Chain

The solid bearing pin chain, while having the same gearing dimensions as the hollow bearing pin chain, has a higher breaking load rating.



Deep Link Chain

This is available in hollow or solid pin versions and has side plates with greater depth.



Chain Rollers

The use of plain or flanged rollers is recommended, but bush chain (without rollers) can be used on certain applications.





Peace of mind

- Flexibility, Service Excellence and Care
- Cost Effective Innovative Complete Solutions
- Leading Edge Technology
- Enhanced Performance and Improved Life Expectancy
- Ultimate Consistency, Reliability and Capability

Fatigue life is improved by maintaining precise fits and tolerances between the pins, bushes and side plates.

Chain and sprocket life are optimised by the rigid control of pitch accuracy, resulting in excellent gearing, lower friction, reduced wear and a reduction in noise levels during operation.

Exact control of bush projection through the chain side plate maintains precise clearances between the chain's inner and outer links. This feature reduces the risk of wear during operation, allows space for lubricant penetration, and greatly reduces the possibility of chain seizure in dusty/abrasive environments.

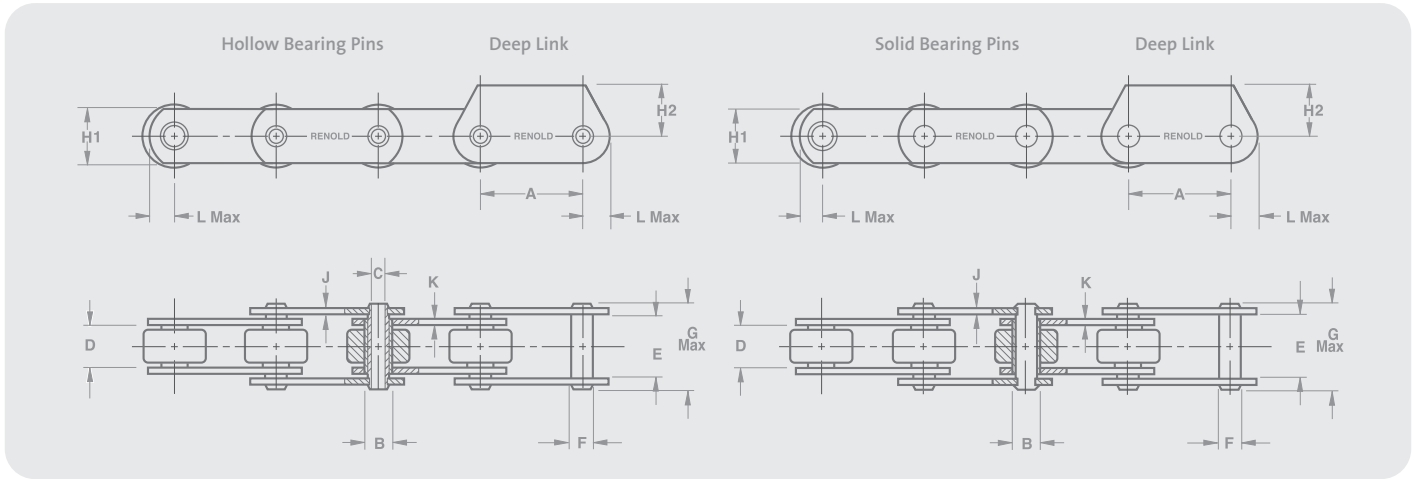


Bush and roller life are maximised by controlling the concentricity of these components and careful selection and control of the heat treatment process.

Down time in hostile environments is minimised by strict control of inner and outer plate clearances, ensuring effective lubricant penetration to the bearing surfaces.

Standard Conveyor Chain

BS4116 Part 4



Hollow bearing pin

Chain Technical details

Breaking Load lbf	Breaking Load Newtons	BS Series Ref	Pitch Min (Inch)	Pitch Max (Inch)	Pitch Min (mm)	Pitch Max (mm)	Bush Dia Max	Hollow Bearing Pin Bore Dia Min	Inside Width Inner Min	Inside Width Outer Min	Pin Diam Max	Pin Len Max	Plate Height	Plate Height	Plate Width Outer	Plate Width Inner	Plate Head Max
			A	A	A	A	B	C	D	E	F	G	H1	H2	J	K	L
4500	20000	2H020	1.500	3.000	38.100	76.200	12.100	6.600	12.700	17.800	9.500	24.600	19.100	-	1.800	2.300	11.400
6000	27000	3H027	1.500	6.000	38.100	152.400	18.000	10.100	15.000	25.400	14.000	36.500	25.400	26.000	3.800	3.800	15.000
12000	54000	4H054	2.000	9.000	50.800	228.600	23.600	13.200	19.000	32.500	19.000	44.000	38.100	32.000	3.800	5.100	22.100
24000	107000	5H107	3.500	12.000	88.900	304.800	33.200	20.100	25.400	43.000	26.900	57.000	51.000	45.000	5.100	7.100	29.700
36000	160000	6H160	5.000	18.000	127.000	457.200	38.100	23.100	38.100	59.000	31.800	79.500	61.000	-	7.600	8.900	34.800

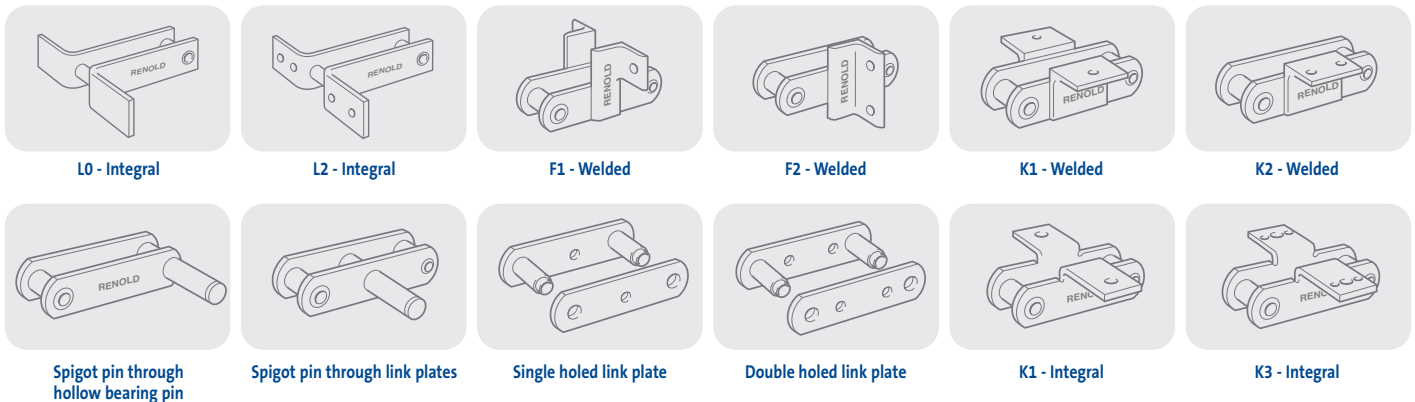
Solid bearing pin

Chain Technical details

			A	A	A	A	B	C	D	E	F	G	H1	H2	J	K	L
3000	13000	1S013	1.000	4.500	25.400	114.300	8.600	-	11.700	16.000	5.700	21.800	18.000	16.000	1.800	1.800	11.400
7500	33000	3S033	1.500	6.000	38.100	152.400	18.000	-	15.000	25.400	14.000	38.000	25.400	26.000	3.800	3.800	15.000
15000	67000	4S067	2.000	9.000	50.800	228.600	23.600	-	19.000	32.500	19.000	46.000	38.100	32.000	3.800	5.100	22.100
30000	134000	5S134	3.500	12.000	88.900	304.800	33.200	-	25.400	43.000	26.900	60.000	51.000	45.000	5.100	7.100	29.700
45000	200000	6S200	5.000	18.000	127.000	457.200	38.100	-	38.100	59.000	31.800	82.000	61.000	-	7.600	8.900	34.800
60000	267000	7S267	6.000	18.000	152.400	457.200	38.100	-	38.100	59.000	23.000	80.000	61.000	-	7.600	8.900	34.800
90000	400000	8S400	6.000	24.000	152.400	609.600	38.100	-	38.100	66.300	29.400	94.000	63.500	-	10.000	13.000	35.800

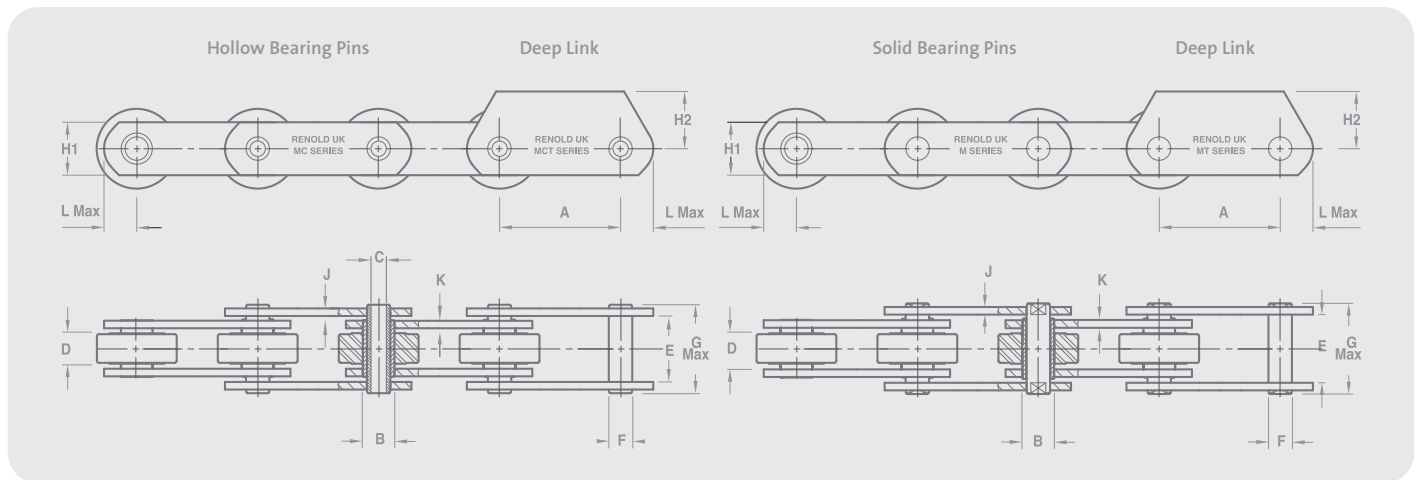
The dimensions listed will not vary with pitch size for each given breaking load. Available connecting links: No.107, No.58, No.11, No.69.

Attachments



For further details of Renold's vast range of conveyor products, please request the Renold Conveyor Chain catalogue.

Standard Conveyor Chain ISO1977, DIN8167, BS4116



Hollow bearing pin

Chain Technical details

Chain No.	Breaking Load Newtons	Pitch Min (mm)	Pitch Max (mm)	Bush Dia Min	Hollow Bearing Pin Bore Dia Min	Inside Width Inner Min	Inside Width Outer Min	Pin Dia Max	Pin Len Max	Plate Height	Plate Height	Plate Width Outer	Plate Width Inner	Plate Head Max
		A	A	B	C	D	E	F	G	H1	H2	J	K	L
MC56	56000	80.000	250.000	21.000	10.200	24.000	33.700	15.500	46.500	35.000	32.500	4.000	4.000	19.400
MC112	112000	100.000	315.000	29.000	14.300	32.000	45.700	22.000	63.000	50.000	45.000	6.000	6.000	27.300
MC224	224000	160.000	500.000	41.000	20.300	43.000	60.800	31.000	83.000	70.000	65.000	8.000	8.000	37.800

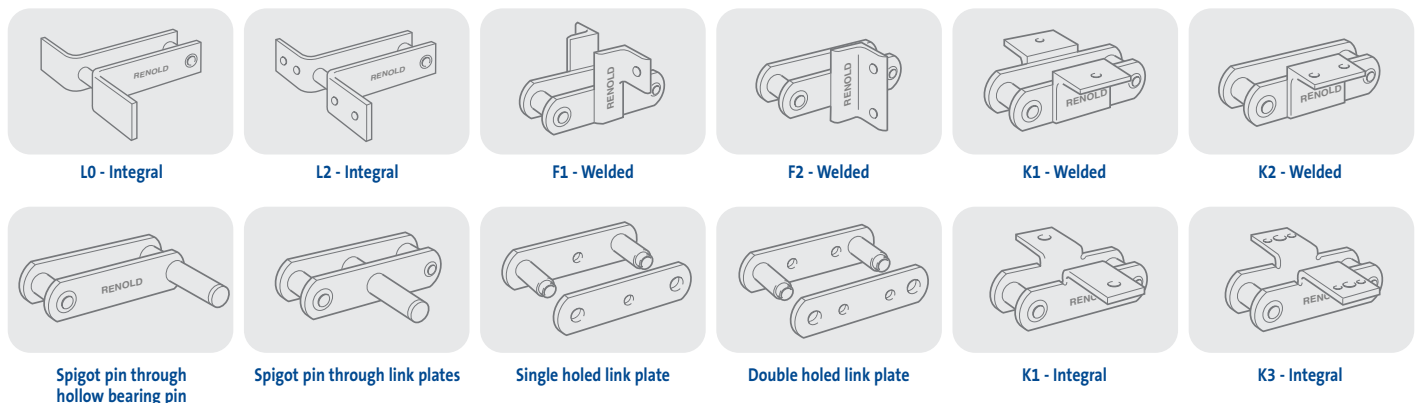
Solid bearing pin

Chain Technical details

		A	A	B	C	D	E	F	G	H1	H2	J	K	L
M40	40000	63.000	250.000	12.500	-	20.000	28.300	8.500	40.300	25.000	22.500	3.500	3.500	15.000
M56	56000	63.000	250.000	15.000	-	24.000	33.300	10.000	46.500	30.000	30.000	4.000	4.000	17.500
M80	80000	80.000	315.000	18.000	-	28.000	39.400	12.000	54.600	35.000	32.500	5.000	5.000	20.200
M112	112000	80.000	400.000	21.000	-	32.000	45.500	15.000	60.300	40.000	40.000	5.000	6.000	23.000
M160	160000	100.000	500.000	25.000	-	37.000	52.500	18.000	72.300	50.000	45.000	6.000	7.000	29.000
M224	224000	125.000	630.000	30.000	-	43.000	60.600	21.000	80.000	60.000	60.000	6.000	8.000	35.000
M315	315000	160.000	630.000	36.000	-	48.000	70.700	25.000	94.500	70.000	65.000	8.000	10.000	38.100
M450	450000	200.000	800.000	42.000	-	56.000	82.800	30.000	111.500	80.000	80.000	10.000	12.000	43.400
M630	630000	250.000	1000.000	50.000	-	66.000	97.000	36.000	135.300	100.000	90.000	14.000	14.000	54.100
M900	900000	250.000	1000.000	60.000	-	78.000	113.000	44.000	156.000	120.000	120.000	16.000	16.000	64.700

The dimensions listed will not vary with pitch size for each given breaking load.
Stainless and zinc plated chains are available to order. Available connecting links: No.107 riveting link, No.58A split pin link.

Attachments



Renold Engineered Specials



Two strands of special conveyor chain delivering spun cast iron pipes.



Conveyor Chain with scraper attachments handling fishmeal products in Peru.



Bucket Conveyor or Elevator.



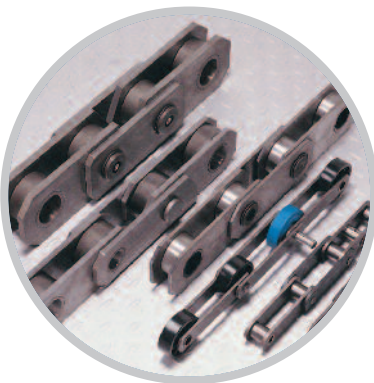
Renold Chain has developed a range of special corrosion resistant chain for water ride applications giving increased service life and reduced maintenance costs.



Special Double Strand Conveyor Chain is designed to give an enhanced chain life in the hot and dusty conditions of a Cement Clinker.



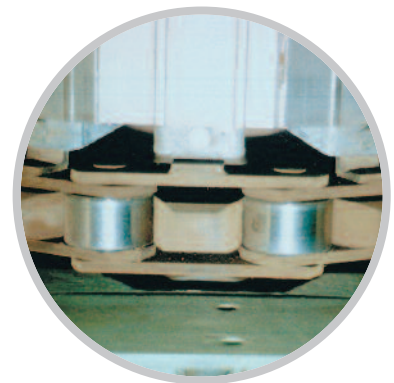
Special Double Strand Conveyor Chain used in a corrugated roofing plant in Chile.



Endurance for Escalator Chain is essential when running in some of the busiest places in the world from Stockholm to New York and London to Melbourne.



Renold Special Chain designed for log elevators, used here in a paper pulp plant, processing 1200 tonnes of timber per day.



Conveyor Chain with Aluminium Slats for a continuous metal belt root crop conveyor.

Renold Engineered Specials



Heavy duty asphalt paver chain for use in production and application.



Heavy duty conveyor chain operating in sugar industry.



Renolube Escalator Chain has been developed as a result of extensive prototype testing in arduous applications to exceed the industry's ever increasing demand for lower service costs and longer lifetime operation.



Heavy series conveyor chain with flanged outboard rollers and welded carrier attachments for vehicle assembly.



A Renold Chain, designed to cope with the hostile environment encountered in sterilising plants.



Palm Oil Mill scraper conveyor - Palm Oil is extracted from the bunches of fruits and the waste is conveyed away.



Renold Chain fitted to primary settlement tanks, is designed to operate fully immersed with the minimum of attention and lubrication.



High temperature Kiln Conveyor for the Ceramic Industry.



Standard Renold Conveyor Chain for everyday use.

Australia**Melbourne (Victoria)**

Tel: + 61 (0) 3 9262 3333
Fax: + 61 (0) 3 9561 8561
e-mail: melsmg@renold.com.au

*also at: Sydney, Brisbane, Adelaide, Perth,
Newcastle, Wollongong, Townsville*

Austria**Vienna**

Tel: + 43 (0) 1 330 3484
Fax: + 43 (0) 1 330 3484-5
e-mail: office@renold.at

*also at: Budapest (Hungary),
Zlin (Czech Republic)*

Belgium**Gent**

Tel: + 32 (0) 9 242 95 50
Fax: + 32 (0) 9 242 95 59
e-mail: info@renold.be

Canada**Montreal (Quebec)**

Tel: + 1 514 367 1764
Fax: + 1 514 367 4993
e-mail: inquiry@renoldcanada.com

China**Shanghai**

Tel: + 21 5046 2696
Fax: + 21 5046 2695
e-mail: sales@renold.cn

France**Seclin**

Tel: + 33 (0) 320 16 29 29
Fax: + 33 (0) 320 16 29 00
e-mail: contact@brampton-renold.com

Germany**Einbeck**

Tel: + 49 (0) 5562 810
Fax: + 49 (0) 5562 81130
e-mail: info@renold.de

also at: Düsseldorf

India**Coimbatore**

Tel: +91 - 422 4226800
Fax: +91 - 422 2532358
e-mail: marketing@renold.in

Malaysia**Selangor Darul Ehsan**

Tel: + 60 3-5122 7880
Fax: + 60 3-5122 7881
e-mail: malaysia@renold.com

also at: Johor Bharu, Ipoh, Penang

Netherlands**Amsterdam**

Tel: + 31 (0) 20 6146661
Fax: + 31 (0) 20 6146391
e-mail: info@renold.nl

New Zealand**Auckland**

Tel: + 64 9828 5018
Fax: + 64 9828 5019
e-mail: aksales@renold.co.nz

also at: Christchurch

Philippines**Paranaque City**

Tel: + 63 2 829 6086
Fax: + 63 2 826 5211

Poland

Tel: + 48 663 842 487
e-mail: info@renold.pl

Russia**Moscow**

Tel: + 7 495 645 2250
Fax: + 7 495 645 2251
e-mail: info@renold.ru

Scandinavia**Hvidovre (Copenhagen)**

Tel: + 45 43 45 26 11
Fax: + 45 43 45 65 92
e-mail: infor@renold.com

Singapore

Tel: + 65 6760 2422
Fax: + 65 6760 1507
e-mail: sales@renold.sg

South Africa**Benoni (Johannesburg)**

Tel: + 27 11 747 9500
Fax: + 27 11 747 9505
e-mail: sales@renold.co.za

*also at: Richards Bay,
Port Elizabeth, Cape Town*

Spain**Gavá (Barcelona)**

Tel: + 34 93 638 9641
Fax: + 34 93 638 0737
e-mail: spain@renold.com

Switzerland**Dübendorf (Zürich)**

Tel: + 41 (0) 44 824 8484
Fax: + 41 (0) 44 824 8411
e-mail: duebendorf@renold.com

also at: Crissier (Lausanne)

UK**Burton upon Trent**

Tel: + 44 (0) 1283 512940
Fax: + 44 (0) 1283 512628
e-mail: ukchain@renold.com

USA**Morristown TN**

Tel: + 1 800 251 9012
Fax: + 1 423 581 2399
e-mail: sales@renoldjeffrey.com

*For other country distributors please consult
www.renold.com.*

*Whilst all reasonable care is taken in compiling
the information contained in this brochure, no
responsibility is accepted for printing errors.*

*All information contained in this brochure is
subject to change after the date of publication.*

© Renold Power Transmission 2010.
Ref: REN24 / ENG / 04.10

RENOLD
Superior Chain Technology